

One Port Street Floorplans

PRESTIGE COLLECTION

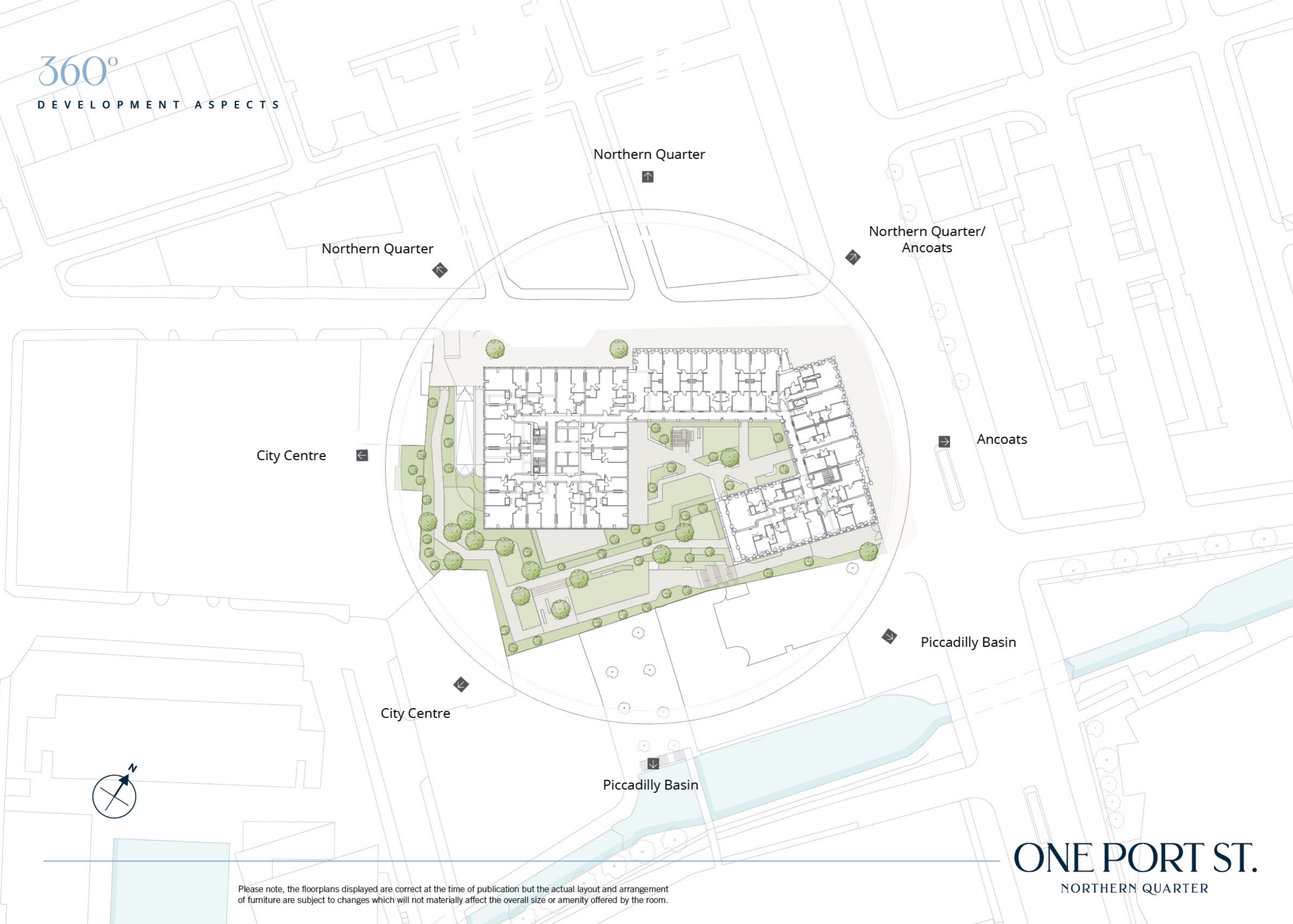


2023

Floorplans

360°

DEVELOPMENT ASPECTS



Northern Quarter

Northern Quarter

Northern Quarter/
Ancoats

City Centre

Ancoats

Piccadilly Basin

City Centre

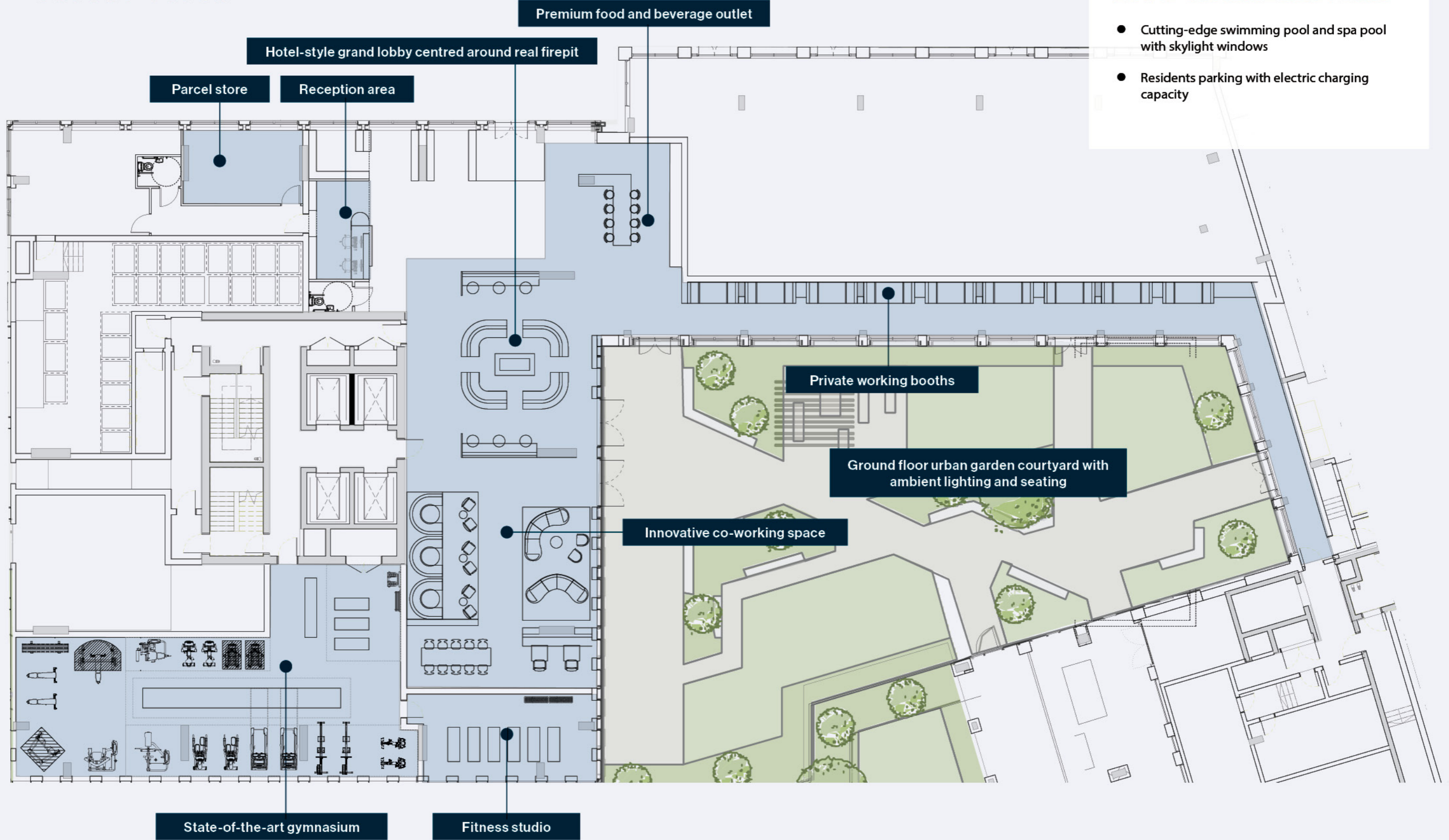
Piccadilly Basin

ONE PORT ST.
NORTHERN QUARTER

Please note, the floorplans displayed are correct at the time of publication but the actual layout and arrangement of furniture are subject to changes which will not materially affect the overall size or amenity offered by the room.

AMENITY SPACE

GROUND FLOOR

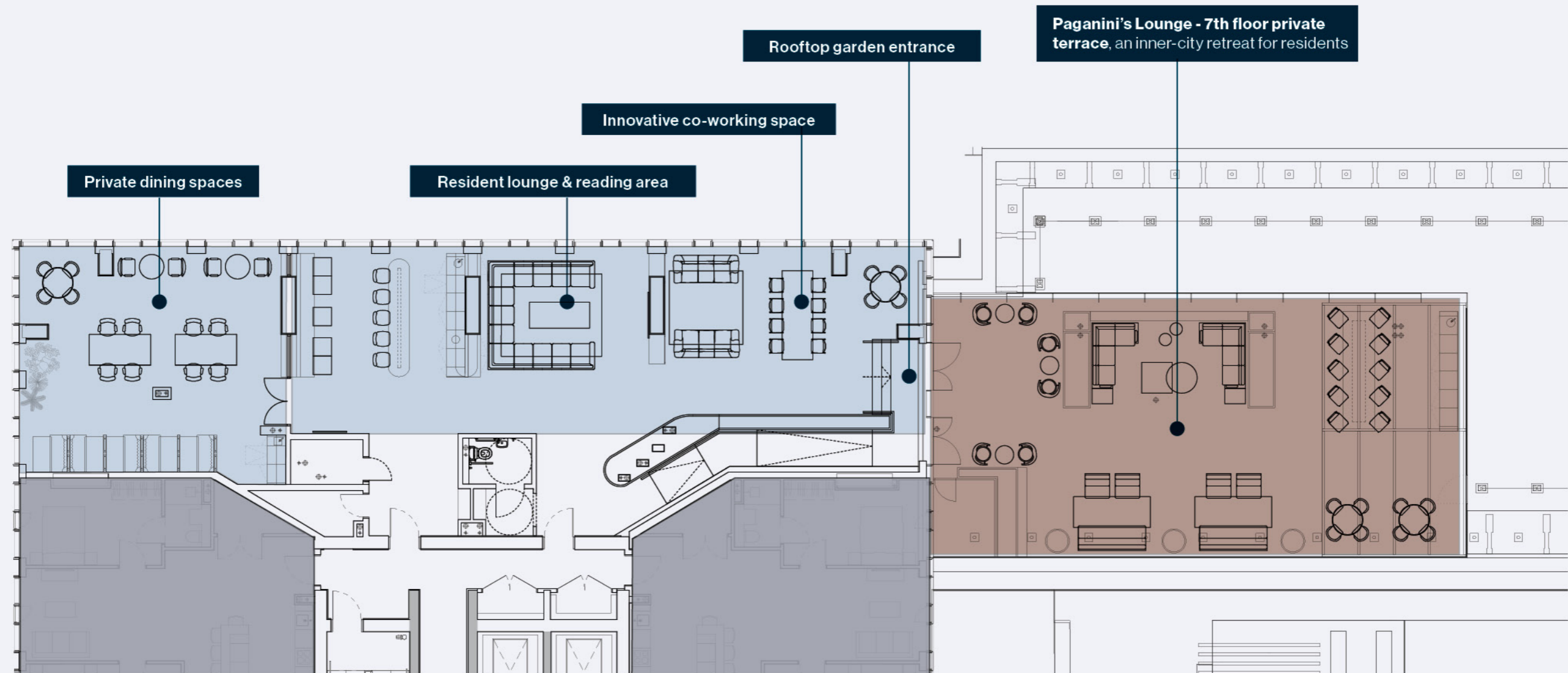


Please note, the floorplans displayed are correct at the time of publication but the actual layout and arrangement of furniture are subject to changes which will not materially affect the overall size or amenity offered by the room.

ONE PORT ST.
NORTHERN QUARTER

7TH FLOOR CLUB LOUNGE

UNRIVALLED INTERIOR DESIGN AND AESTHETIC

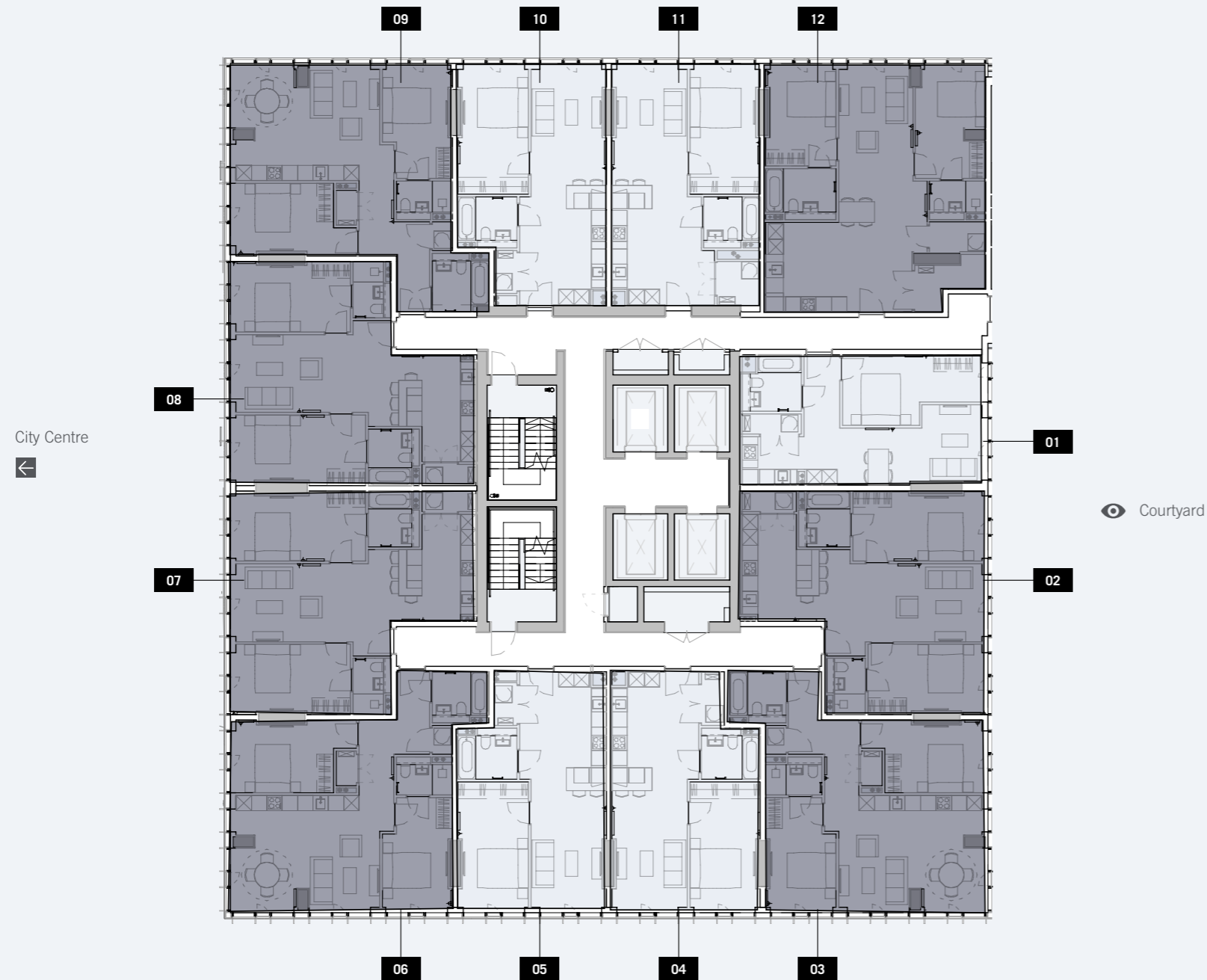


Please note, the floorplans displayed are correct at the time of publication but the actual layout and arrangement of furniture are subject to changes which will not materially affect the overall size or amenity offered by the room.

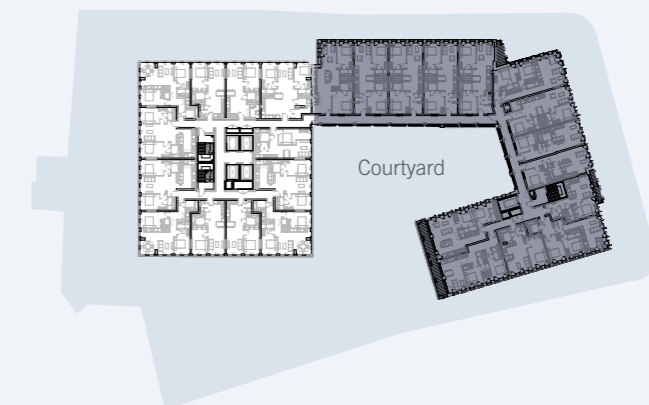
ONE PORT ST.
NORTHERN QUARTER

LEVEL 01 - 06

👁 Northern Quarter



COLOR	APT NO	BEDROOM	TOTAL SIZE (SQFT)
Light Blue	1	1 BED	508
Dark Blue	2	2 BED	758
Dark Blue	3	2 BED	755
Light Blue	4	1 BED	541
Light Blue	5	1 BED	538
Dark Blue	6	2 BED	755
Dark Blue	7	2 BED	758
Dark Blue	8	2 BED	758
Dark Blue	9	2 BED	763
Light Blue	10	1 BED	538
Light Blue	11	1 BED	571
Dark Blue	12	2 BED	861

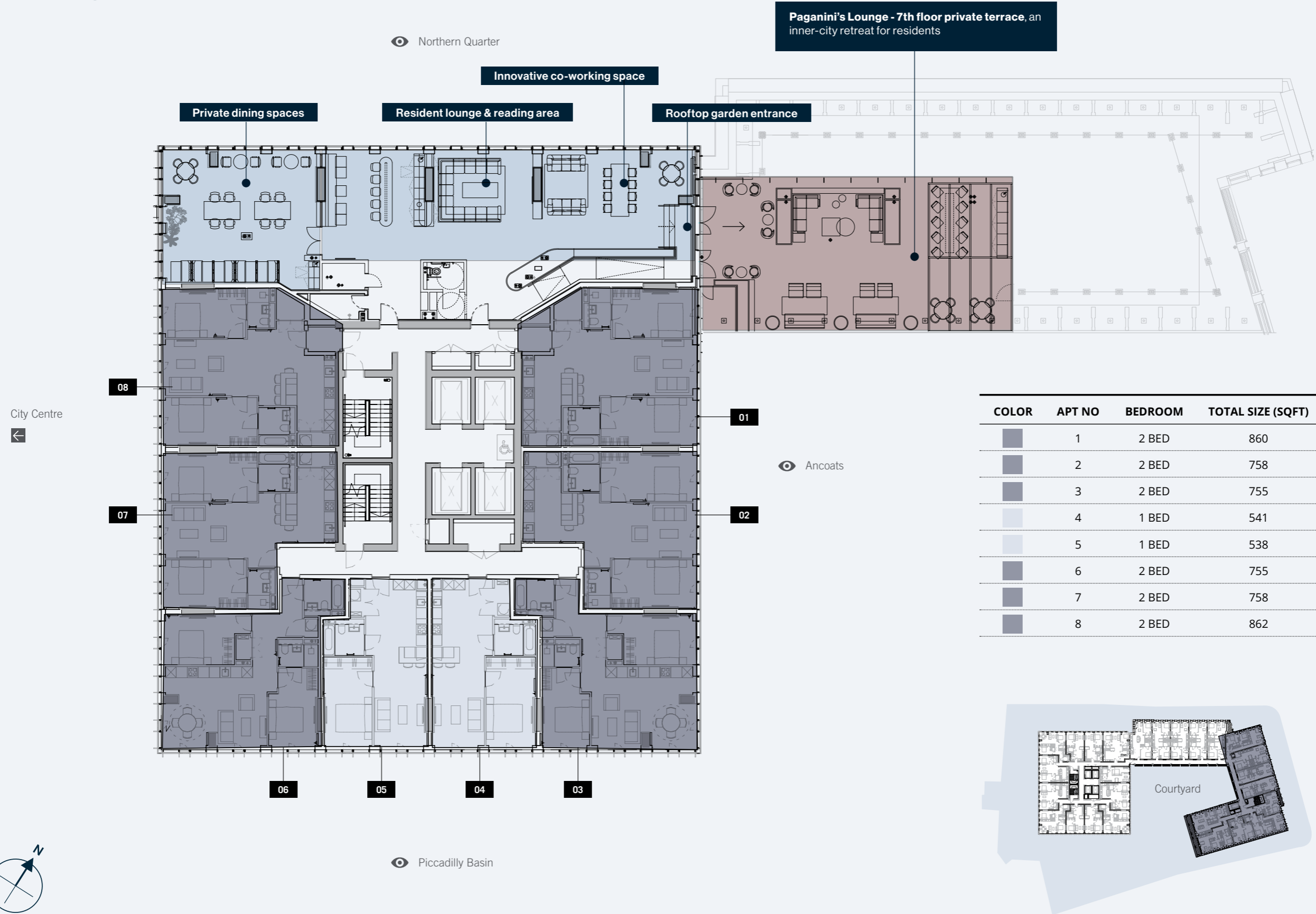


👁 Piccadilly Basin

ONE PORT ST. NORTHERN QUARTER

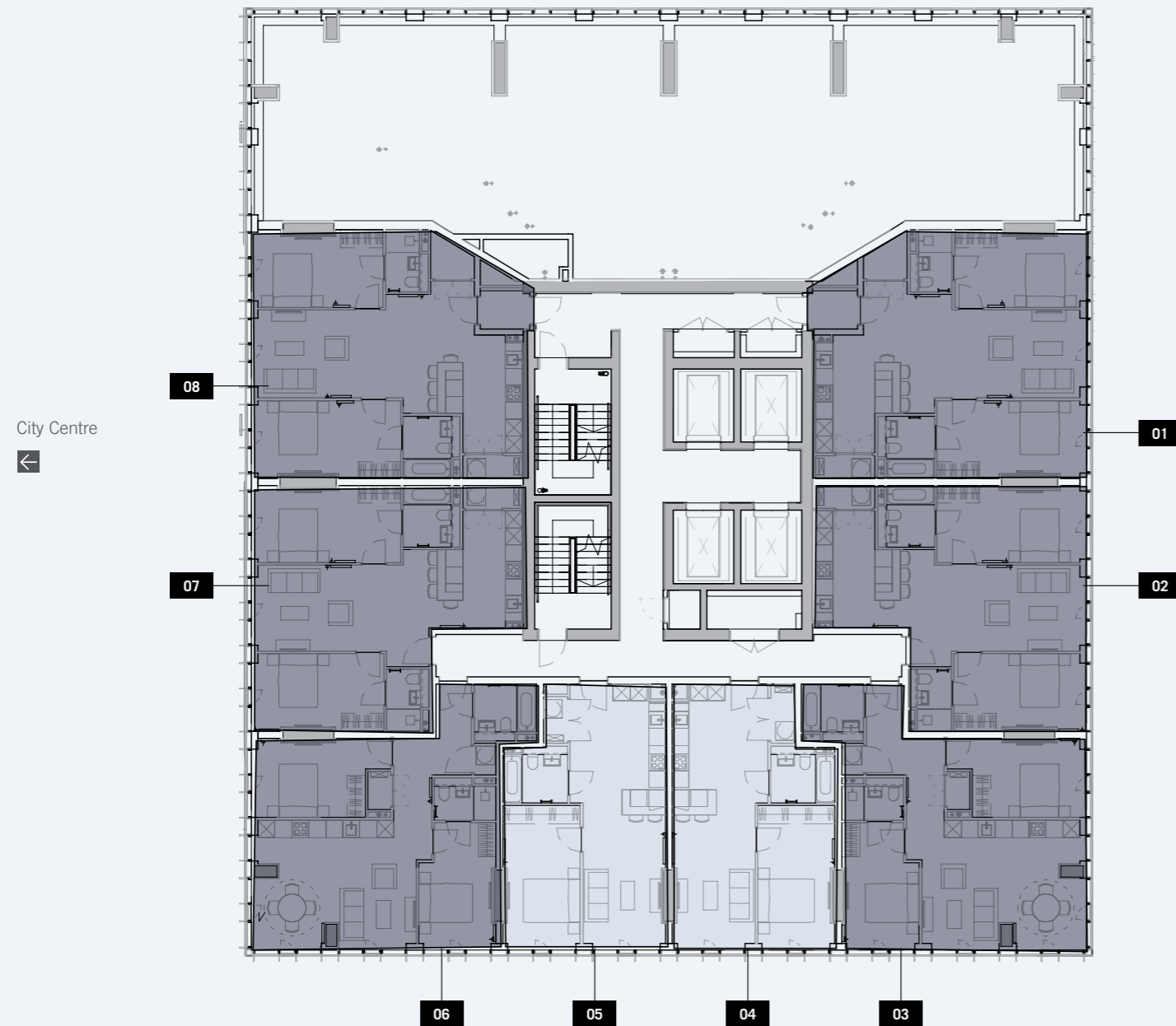
Please note, the floorplans displayed are correct at the time of publication but the actual layout and arrangement of furniture are subject to changes which will not materially affect the overall size or amenity offered by the room.

LEVEL 07



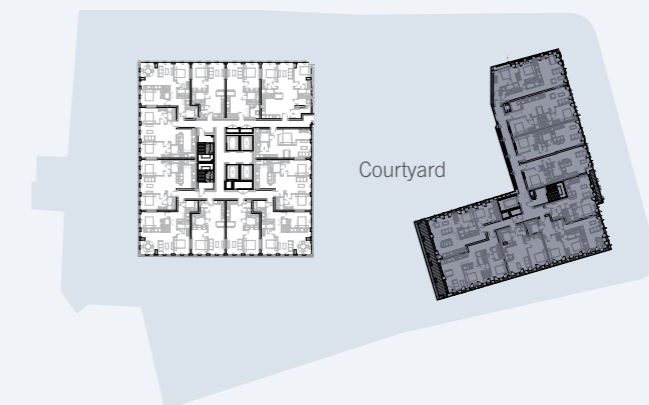
LEVEL 08

👁 Northern Quarter



👁 Ancoats

COLOR	APT NO	BEDROOM	TOTAL SIZE (SQFT)
■	1	2 BED	860
■	2	2 BED	758
■	3	2 BED	755
■	4	1 BED	541
■	5	1 BED	538
■	6	2 BED	755
■	7	2 BED	758
■	8	2 BED	862



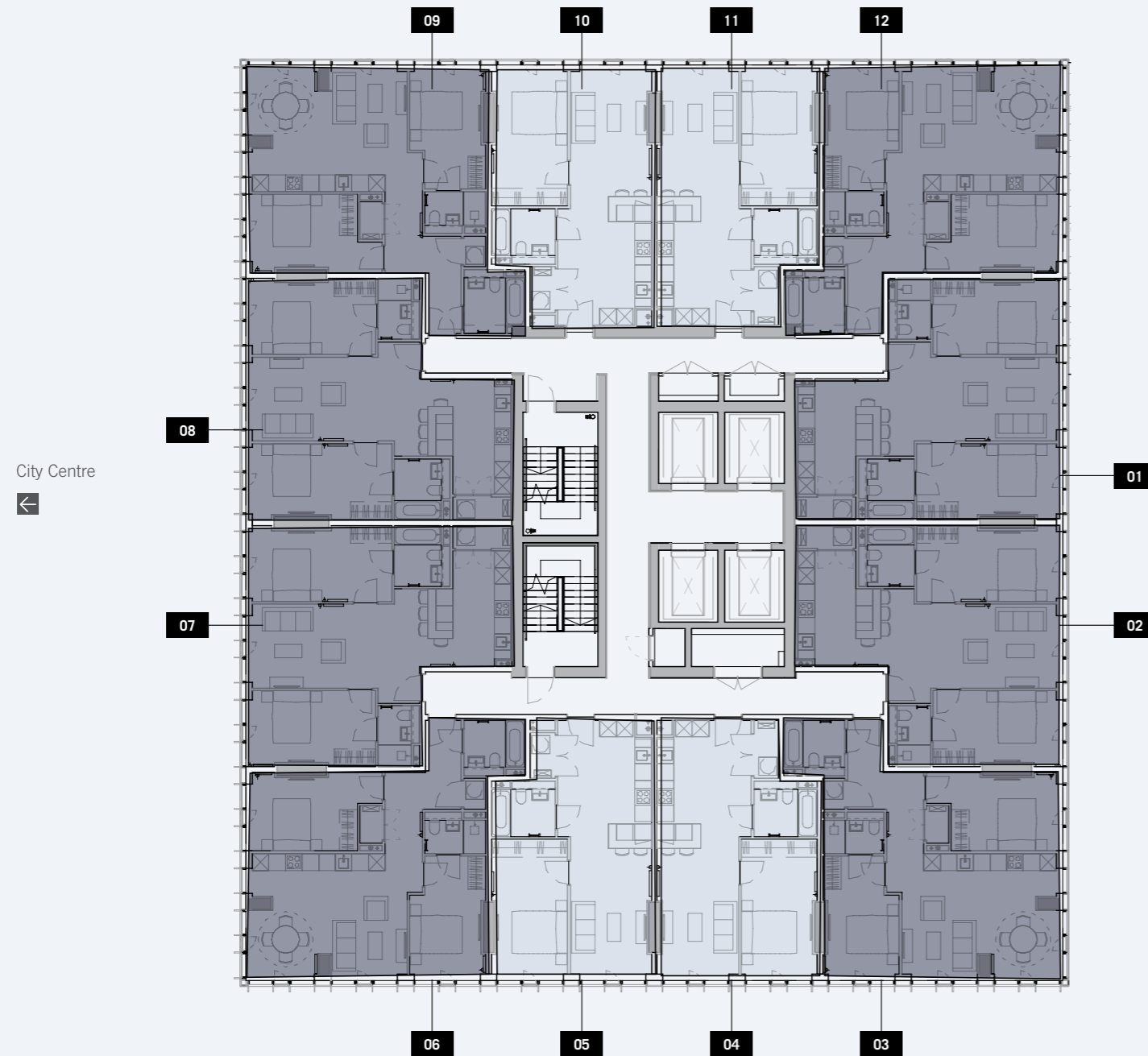
👁 Piccadilly Basin

ONE PORT ST. NORTHERN QUARTER

Please note, the floorplans displayed are correct at the time of publication but the actual layout and arrangement of furniture are subject to changes which will not materially affect the overall size or amenity offered by the room.

LEVEL 09

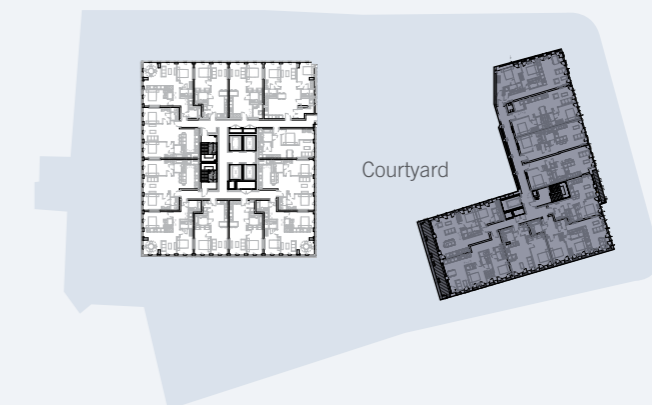
👁 Northern Quarter



👁 Ancoats

👁 Piccadilly Basin

COLOR	APT NO	BEDROOM	TOTAL SIZE (SQFT)
■	1	2 BED	756
■	2	2 BED	758
■	3	2 BED	755
■	4	1 BED	541
■	5	1 BED	538
■	6	2 BED	755
■	7	2 BED	758
■	8	2 BED	758
■	9	2 BED	763
■	10	1 BED	538
■	11	1 BED	541
■	12	2 BED	764



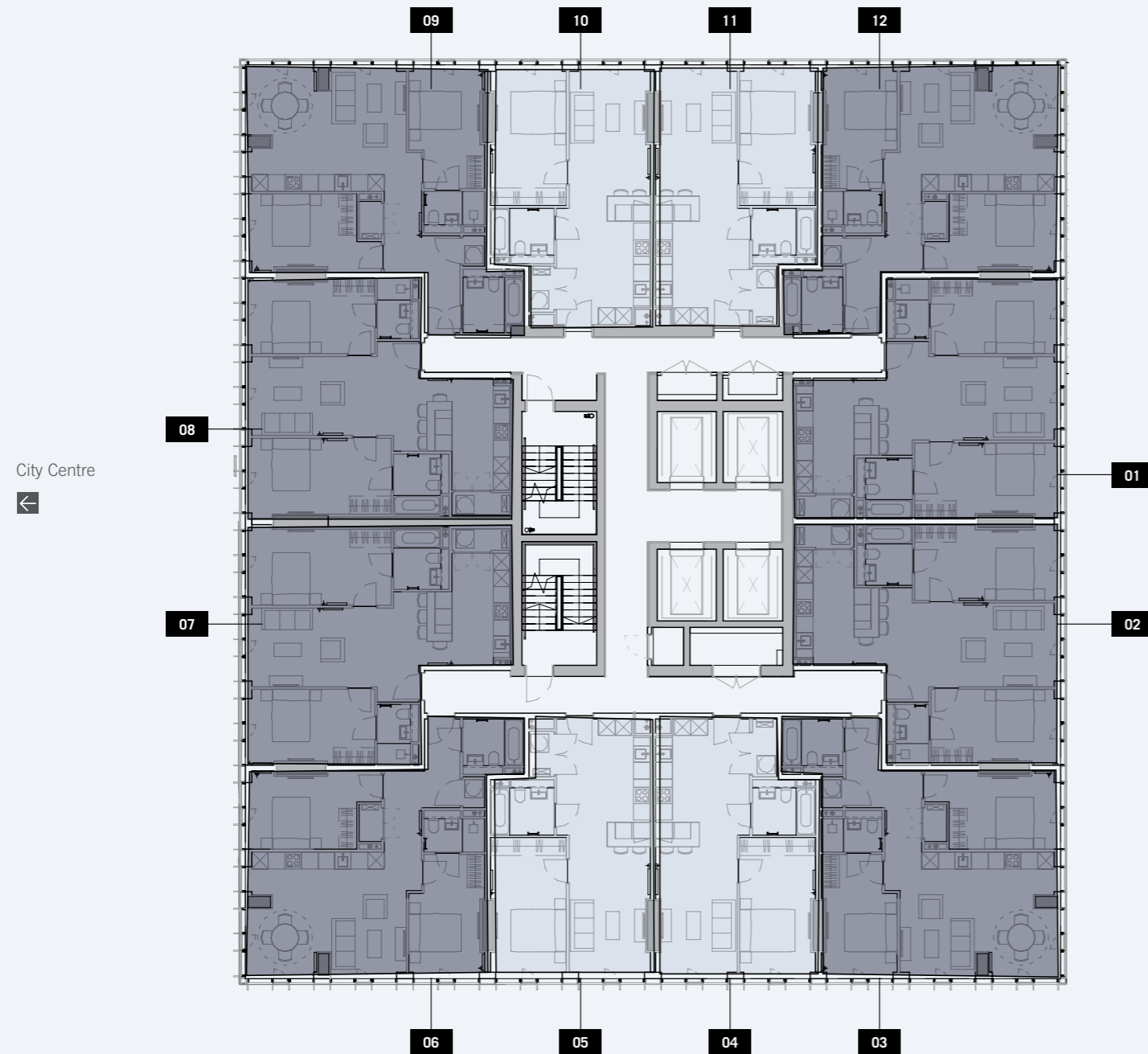
Please note, the floorplans displayed are correct at the time of publication but the actual layout and arrangement of furniture are subject to changes which will not materially affect the overall size or amenity offered by the room.

ONE PORT ST.

NORTHERN QUARTER

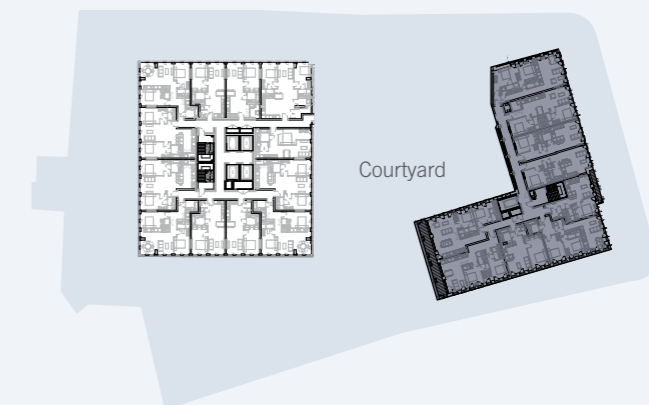
LEVEL 10

👁 Northern Quarter



COLOR	APT NO	BEDROOM	TOTAL SIZE (SQFT)
■	1	2 BED	756
■	2	2 BED	758
■	3	2 BED	755
■	4	1 BED	541
■	5	1 BED	538
■	6	2 BED	755
■	7	2 BED	748
■	8	2 BED	750
■	9	2 BED	763
■	10	1 BED	538
■	11	1 BED	541
■	12	2 BED	764

👁 Ancoats



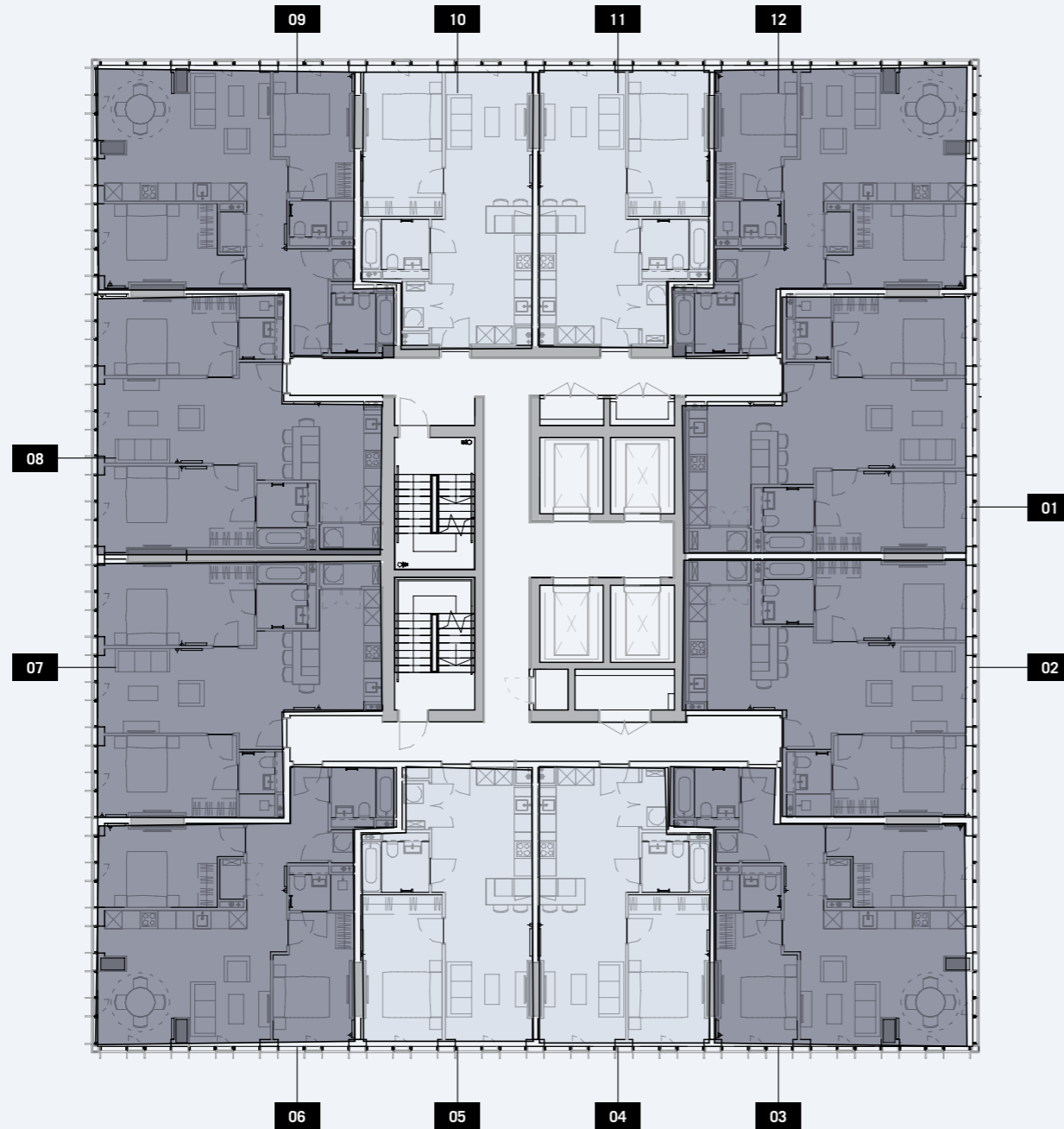
👁 Piccadilly Basin

ONE PORT ST. NORTHERN QUARTER

Please note, the floorplans displayed are correct at the time of publication but the actual layout and arrangement of furniture are subject to changes which will not materially affect the overall size or amenity offered by the room.

LEVEL 11

👁 Northern Quarter



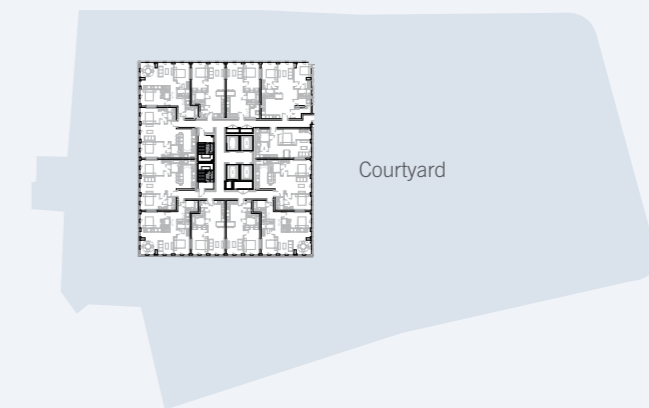
City Centre
←

👁 Ancoats

👁 Piccadilly Basin



COLOR	APT NO	BEDROOM	TOTAL SIZE (SQFT)
■	1	2 BED	756
■	2	2 BED	758
■	3	2 BED	755
■	4	1 BED	541
■	5	1 BED	538
■	6	2 BED	755
■	7	2 BED	748
■	8	2 BED	750
■	9	2 BED	763
■	10	1 BED	538
■	11	1 BED	541
■	12	2 BED	763

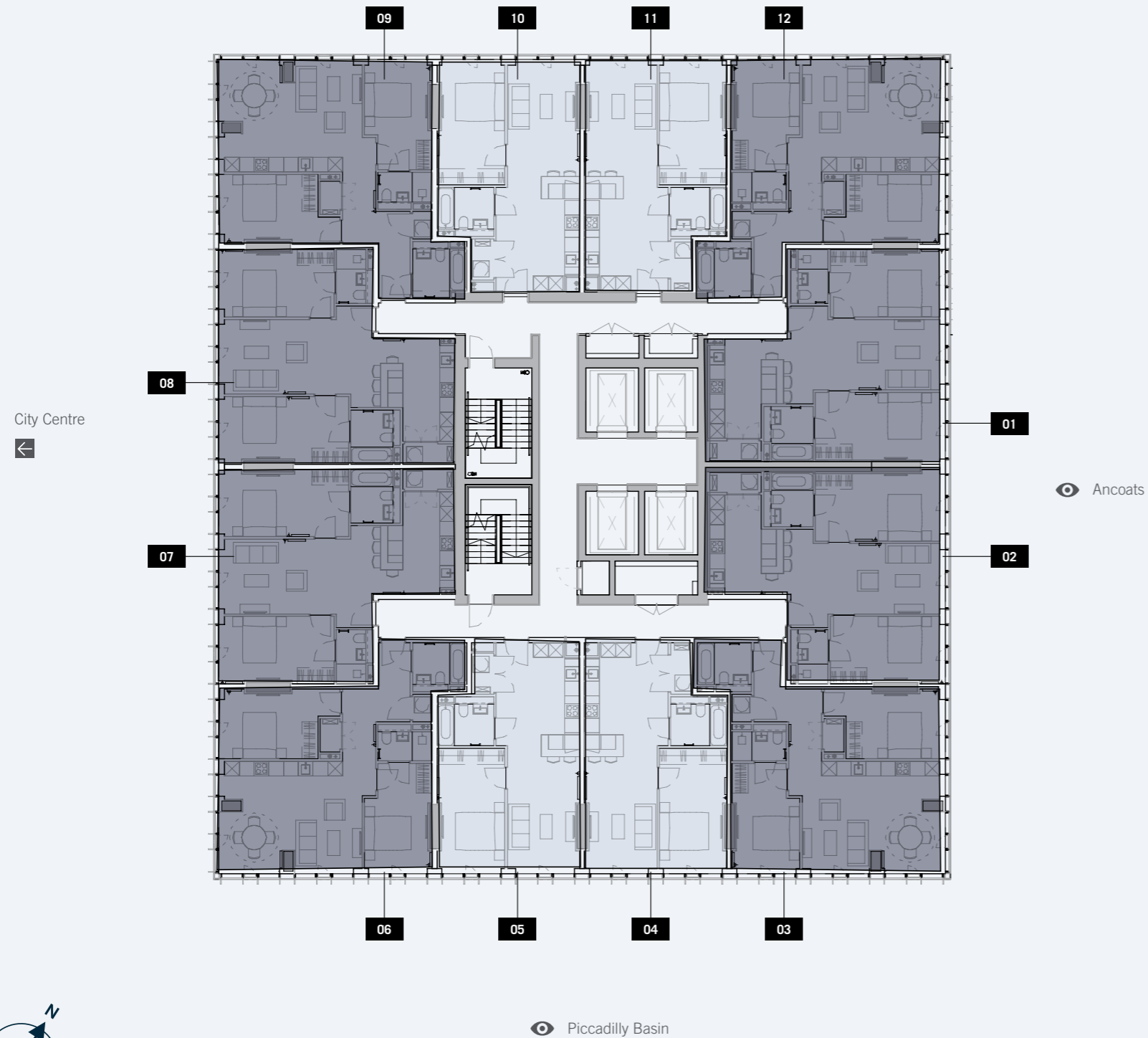


ONE PORT ST.
NORTHERN QUARTER

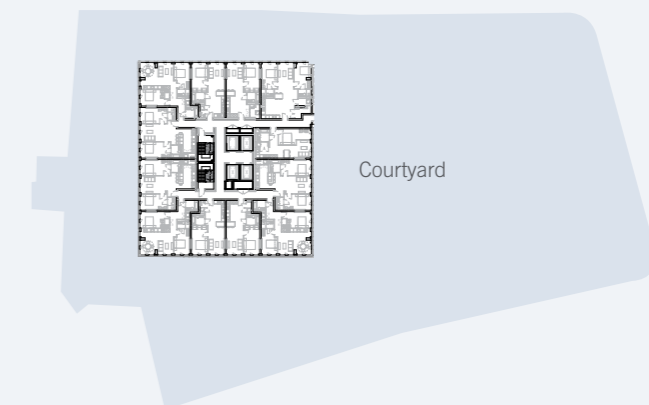
Please note, the floorplans displayed are correct at the time of publication but the actual layout and arrangement of furniture are subject to changes which will not materially affect the overall size or amenity offered by the room.

LEVEL 12 - 13

👁 Northern Quarter



COLOR	APT NO	BEDROOM	TOTAL SIZE (SQFT)
■	1	2 BED	749
■	2	2 BED	748
■	3	2 BED	755
■	4	1 BED	541
■	5	1 BED	538
■	6	2 BED	755
■	7	2 BED	758
■	8	2 BED	758
■	9	2 BED	763
■	10	1 BED	538
■	11	1 BED	541
■	12	2 BED	763

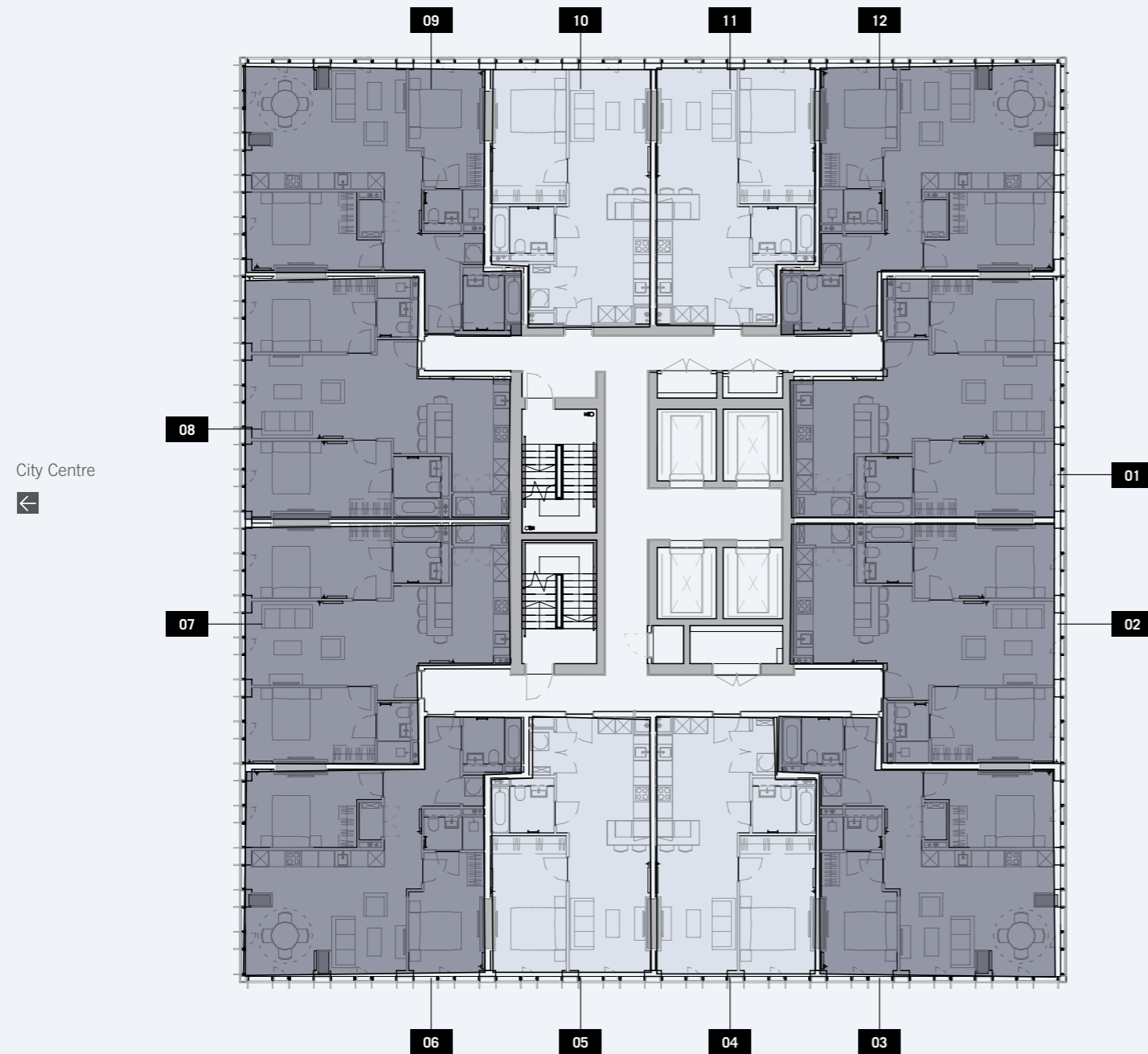


ONE PORT ST.
NORTHERN QUARTER

Please note, the floorplans displayed are correct at the time of publication but the actual layout and arrangement of furniture are subject to changes which will not materially affect the overall size or amenity offered by the room.

LEVEL 14 - 30

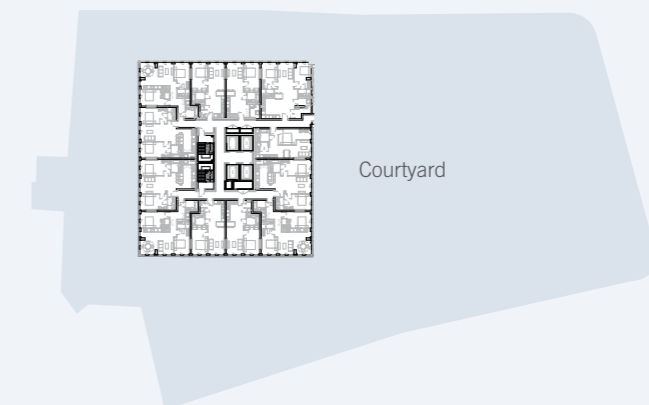
👁 Northern Quarter



👁 Ancoats

👁 Piccadilly Basin

COLOR	APT NO	BEDROOM	TOTAL SIZE (SQFT)
■	1	2 BED	756
■	2	2 BED	758
■	3	2 BED	755
■	4	1 BED	541
■	5	1 BED	538
■	6	2 BED	755
■	7	2 BED	758
■	8	2 BED	758
■	9	2 BED	763
■	10	1 BED	538
■	11	1 BED	541
■	12	2 BED	764

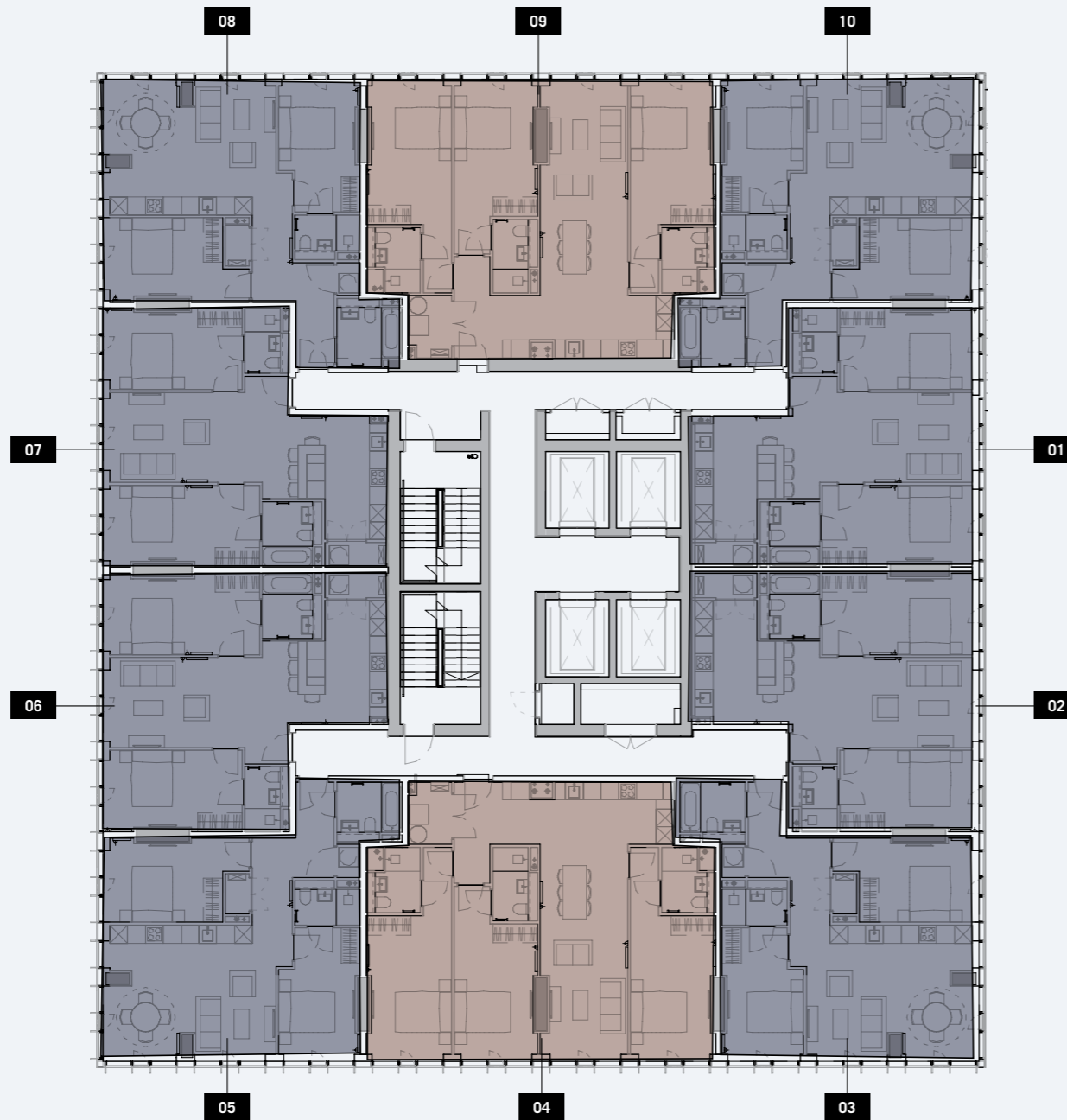


Please note, the floorplans displayed are correct at the time of publication but the actual layout and arrangement of furniture are subject to changes which will not materially affect the overall size or amenity offered by the room.

ONE PORT ST.
NORTHERN QUARTER

LEVEL 31

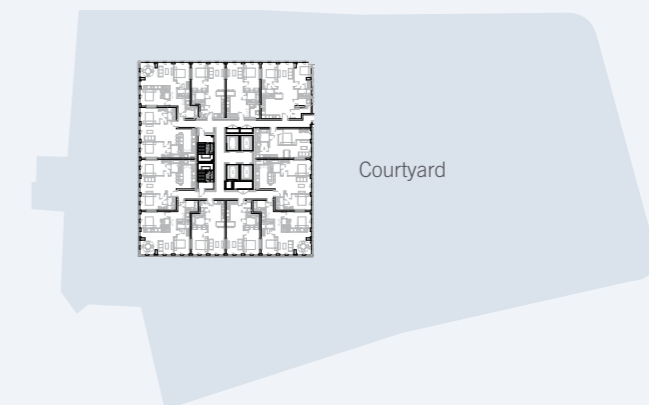
👁 Northern Quarter



City Centre
←

👁 Ancoats

COLOR	APT NO	BEDROOM	TOTAL SIZE (SQFT)
■	1	2 BED	756
■	2	2 BED	758
■	3	2 BED	755
■	4	3 BED	1098
■	5	2 BED	755
■	6	2 BED	758
■	7	2 BED	758
■	8	2 BED	763
■	9	3 BED	1098
■	10	2 BED	763



👁 Piccadilly Basin

ONE PORT ST. NORTHERN QUARTER

Please note, the floorplans displayed are correct at the time of publication but the actual layout and arrangement of furniture are subject to changes which will not materially affect the overall size or amenity offered by the room.



Please note that the information that we distribute is produced with great care and believed to be correct at the time (insert month/year), to the best of our knowledge. Pictures, computer-generated views, layouts and other details are given as a general guide and may change from time to time in accordance with the final designs of the development and appropriate planning permissions.